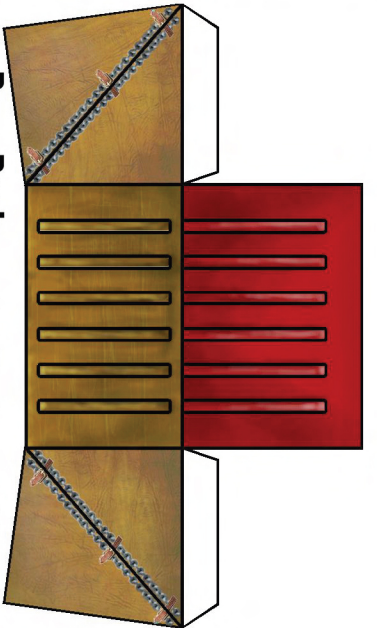


STAGECOACH

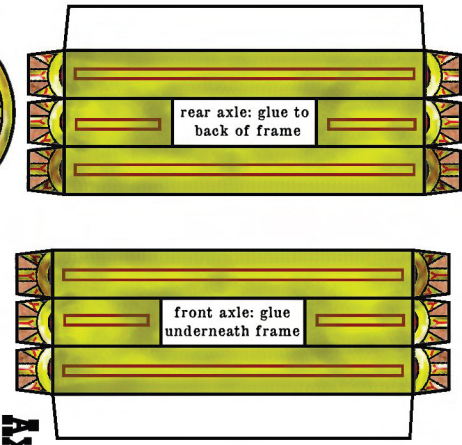
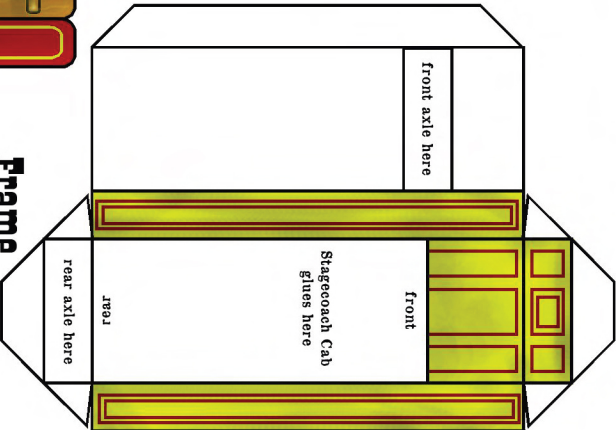
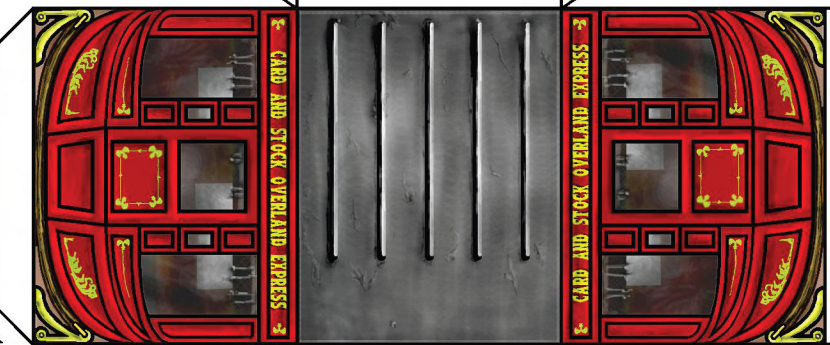
© 2011 Shawn Harvey
Grendels_Mother64

Stagecoach Cab

The Cab is a simple box with a Perch glued to the front and a Rack glued to the back. The cab itself is glued on top of the Frame.

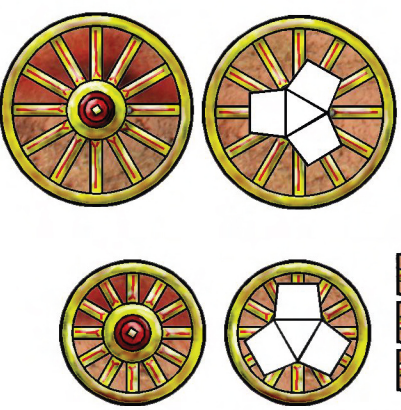


Rear Rack The two outside triangle sections fold back over and are glued. The red wall section folds up, and the tabs glue in behind.



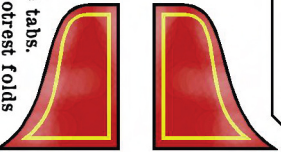
Axles & Wheels

The axles are triangular cross-section beams with end-tabs that spread out and glue to the inside face of the wheels.



Driver's Perch

The back of the perch folds up and the tabs are glued to the outside. The two outside face pieces then glue over the tabs. The red section of the footrest folds under to be glued.



Frame

The frame is a simple elongated box. The Stagecoach cab glues to the white section marked on top. The front axle glues to the section marked on the bottom, and the rear axle glues to the back edge of the frame (not underneath).