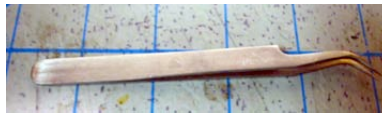


**Cicada**  
**1/600 scale VSF aerial gunship**

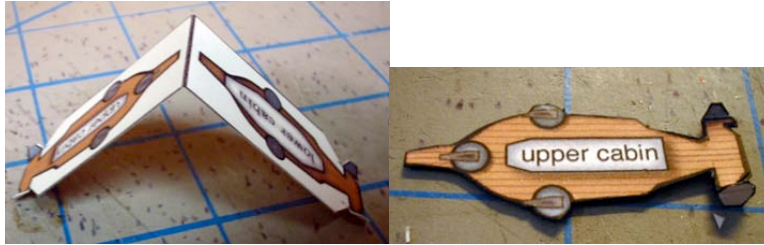
**by Eric R. Brown**  
**[squirmymdad@yahoo.com](mailto:squirmymdad@yahoo.com)**



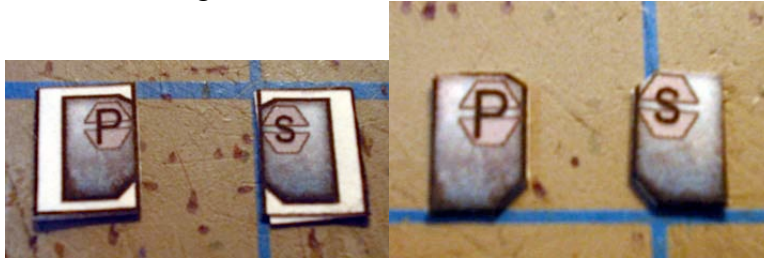
Hello and thank you for downloading this paper model. There are not very many parts involved, but they are quite small. The model was created at a resolution of 300dpi so enlarging it to 200% to create a 1/300-scale model would not result in a great degree of texture and image degradation. I used 110lb (199g/m) weight paper stock because I like sturdy models. Some of the folds involved are easier to do with 70lb paper stock; it's up to you.



One of the most helpful tools for working with models this small is a pair of crooked-neck fine-point tweezers. I got mine at a local game shop in Anchorage, Alaska, so I can't imagine they'd be too difficult to come across.



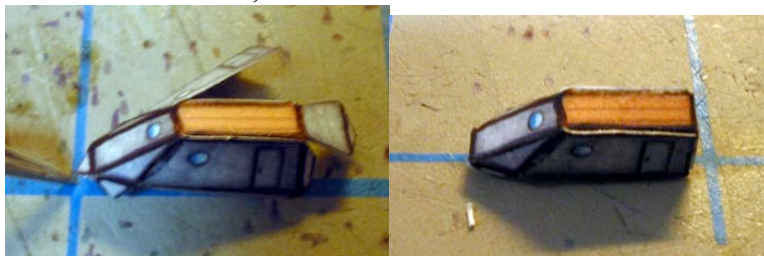
Start by cutting out the main deck piece. Score and bend in the center as shown. Cut around the tail assembly and bend the grey glue flaps up, they do not glue to each other. Glue the deck halves together and cut out.



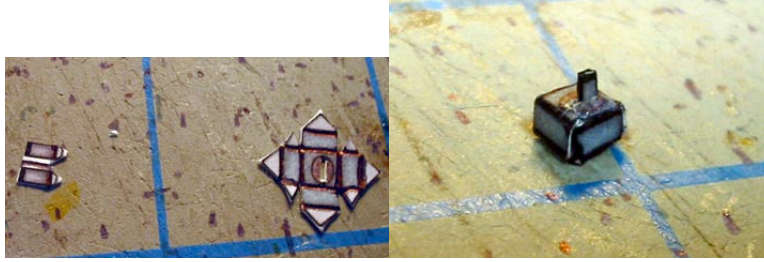
The tailfins fold up like so, 'P' is for Port (left side) and 'S' is for Starboard (right side). Fold in the centers, glue shut, cut around the fin, set aside for a bit.



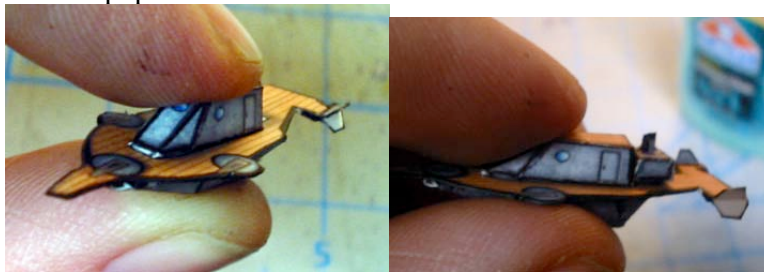
This piece is the lower cabin, it is an open box that glues onto the bottom of the deck, the observation window faces forward when attaching it to the deck. Fold in and glue one side of the cabin as show, then the other.



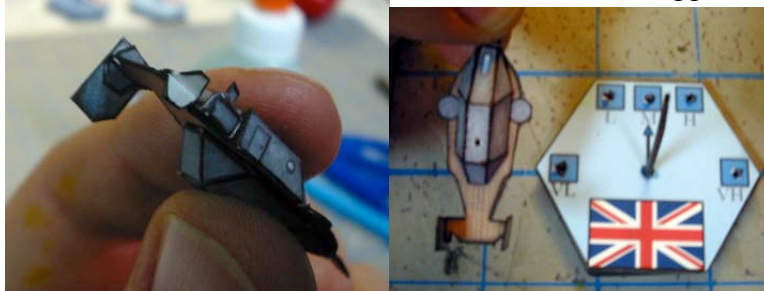
This is the upper cabin; it's a lot like the lower cabin. Attach one side at a time to the tabs coming off the cabin top, then fold down the aft end of the cabin to make the open box that'll glue onto the upper deck.



The boiler box is the smallest and most difficult piece to assemble. Be sure to cut out the yellow stripe in the center to create a slit for the smokestack to push through. The smokestack folds and glues together like the tailfins. When it is completed push it up through the center slit and glue those itty-bitty tabs to the underside of the boiler box. Then make the box, which will be open it's bottom side. This is the piece that's definitely easier to make in 70lb paper.



Okay, take the completed cabins and glue them onto the deck in the areas outlined. Pinching them down as shown helps with a good solid adhesion. This is why I use 110lb paper stock for my creations. The boiler sits behind the upper cabin.



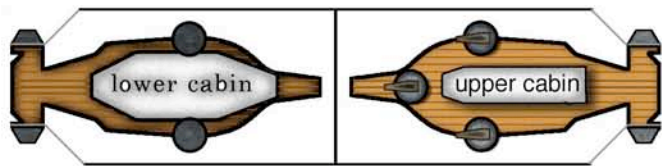
Now for the tailfins; just glue the tabs on the deck onto the corresponding shapes on the fins so it looks like the pictures. I've also provided flight bases with elevation markers for using these models in games of Sky Galleons of mars or other games that handle elevation in a similar manner. The arrow on the base indicates the front.

I've used a flat toothpick as a flight stand. It is glued into the foamcore base and then I've drilled out a small hole in the lower cabin to insert the pole into. I don't glue the poles into the cabins, as sometimes the model may need to land in the game.



A pair of Cicadas on patrol at the Williamson Auditorium





starboard



port

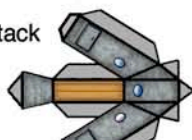
Tailfins



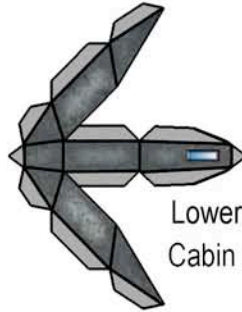
smokestack



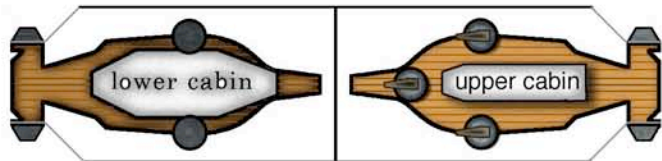
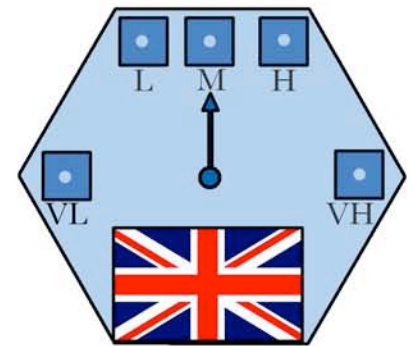
smokestack  
base



Upper  
Cabin



Lower  
Cabin



starboard



port

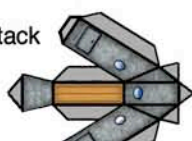
Tailfins



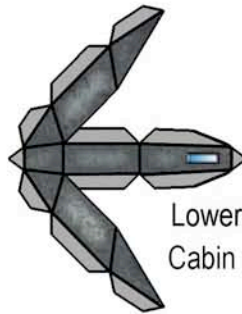
smokestack



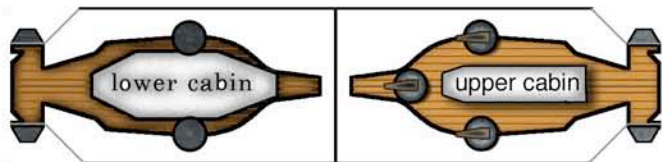
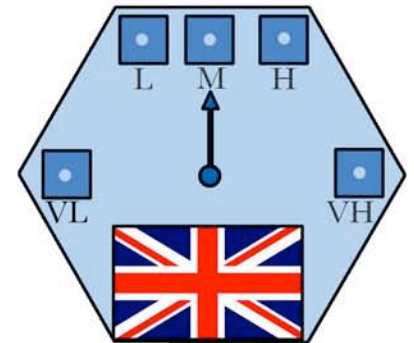
smokestack  
base



Upper  
Cabin



Lower  
Cabin



starboard



port

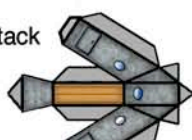
Tailfins



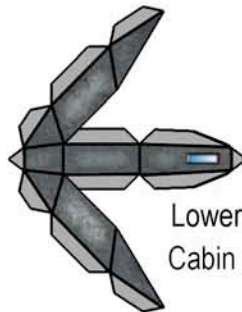
smokestack



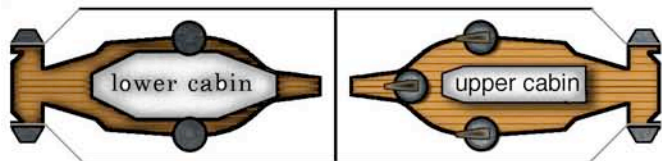
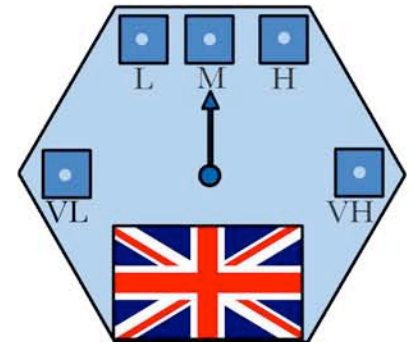
smokestack  
base



Upper  
Cabin



Lower  
Cabin



starboard



port

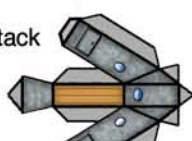
Tailfins



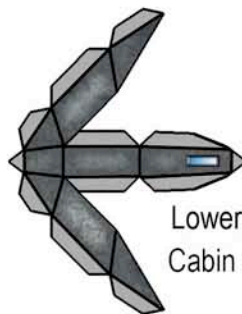
smokestack



smokestack  
base



Upper  
Cabin



Lower  
Cabin

